

# QO2000 Series Owners Manual

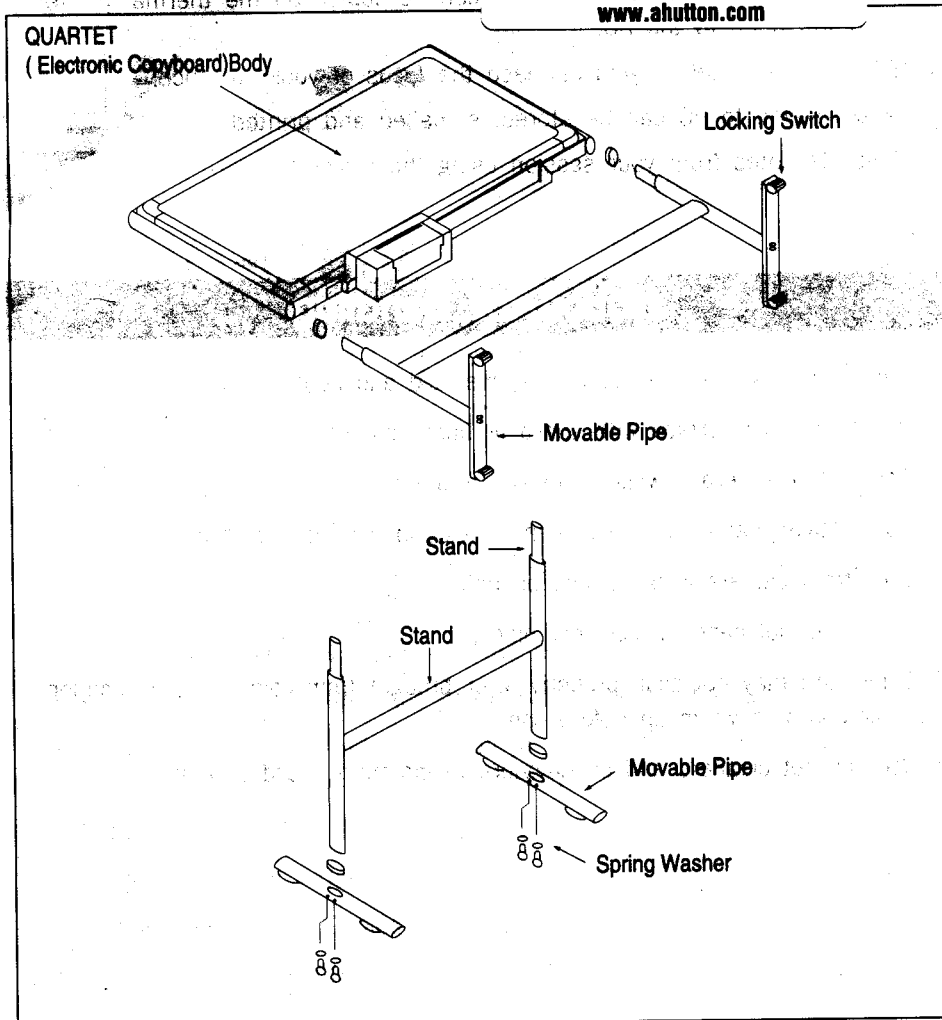
For Paper use locally purchased standard thermal fax paper  
for SERVICE call (800)790-7787

QO2000+ 2100

Assembly

**Indoff**

140 WEST WYND TERRACE  
MIDDLETOWN, CT 06457  
(860) 632-2026  
FAX (860) 632-2028  
[www.ahutton.com](http://www.ahutton.com)



1. Place plastic oval ring on the bottom of each leg on main stand assembly.
2. Attach left foot to bottom leg of main assembly using spring washers and 1" Allen head bolts. Repeat on right side.
3. Insert casters into bottom of feet. Locking casters in front.
4. Place plastic oval rings on left and right post of main assembly.
5. With 2 people slide board onto main assembly. Secure with 1" Allen head bolts.

## Features and Advantages

- Ideas written on the board screen can be copied on the thermal printer or downloaded to the PC.
- Eliminate note taking and increase the focus of your audience.
- Notes saved to PC can be stored, e-mailed and printed.
- Edit the notes from your session using the drawing tools.

## Notice for Handling

1. Keep out of sun and areas of extreme cold and heat.
2. Don't write on surface with sharp or hard objects.
3. Don't write or erase while screen is rotating.
4. Don't leave marker ink on screen for extended periods of time.
5. Lock front casters when writing on board.
6. Store thermal paper in cool dry place.
7. Copyboard may not scan properly after brought from cold to warm location. Allow board to warm up before use.
8. Use Quartet cleaners and conditioners to maintain board surface.

***Indoff***

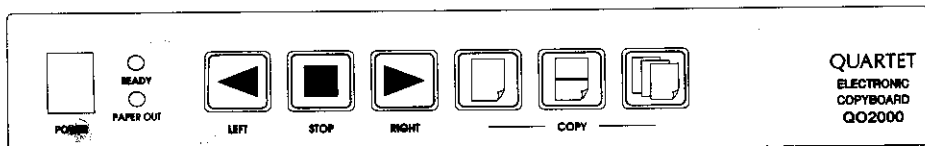
**140 WEST WYND TERRACE  
MIDDLETOWN, CT 06457**

**(860) 632-2026**

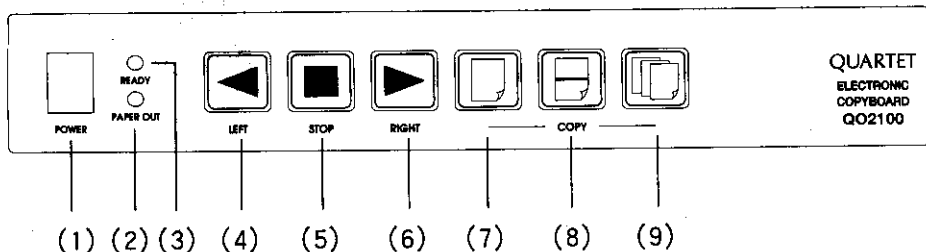
**FAX (860) 632-2028**

**[www.ahutton.com](http://www.ahutton.com)**

# Operation of Control Panel



QUARTET  
ELECTRONIC  
COPYBOARD  
QO2000



QUARTET  
ELECTRONIC  
COPYBOARD  
QO2100

1. Power Switch
2. Paper Out Light : Lights up when there is no paper or paper is loaded incorrectly.
3. Ready Lamp : will be lit when power is on.
4. Left rotate switch : Rotates board one screen to the left.
5. Stop : Stops board during rotation. If copy button is pressed, only that portion not rotated will be copied.
6. Right rotate switch : Rotates board one screen to the right.
7. Single page copy : Copies one screen on thermal printer.
8. Double page copy : Copies two screens onto single page.
9. Memory recall : Prints copy of previous scanned image.

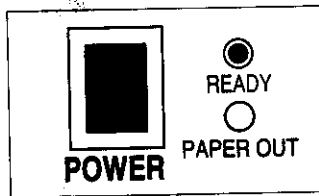
**Indoff**

140 WEST WYND TERRACE  
MIDDLETOWN, CT 06457  
(860) 632-2026  
FAX (860) 632-2028  
[www.ahutton.com](http://www.ahutton.com)

# Using the Copyboard

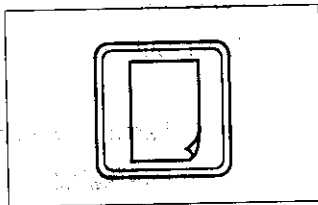
## Before Using

1. Lock the front casters.
2. Insert plug into wall outlet.  
(This unit can use 100V - 220V at 50 -60 Hz.)
3. Push on switch, Ready lamp should be green.



## To copy one screen

1. Take notes on the board with dry-erase marker.
2. Press copy key, after a few seconds delay, screen will begin to rotate left.
3. The screen will stop rotating after about 12seconds. Thermal copy will complete seconds after screen stops.
4. Tear paper upwards and to the right.



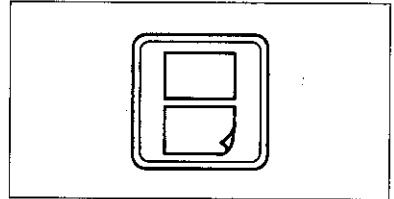
***Indoff***

**140 WEST WYND TERRACE  
MIDDLETOWN, CT 06457  
(860) 632-2026  
FAX (860) 632-2028  
[www.ahutton.com](http://www.ahutton.com)**

## To copy two screens

---

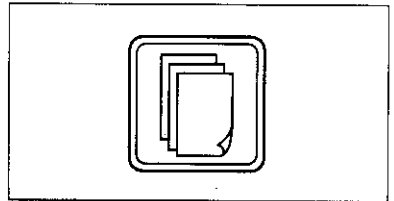
1. Take notes on both sides of screen with dry-erase marker.
2. Press copy key, after a few seconds delay screen will begin to rotate left.
3. The screen will stop rotating after about 24 seconds. Thermal copy will complete seconds after screen stops.
4. Tear paper upwards and to the right.



## For the Memory Copy

---

1. After copying one or two screens, press memory recall to reprint last scanned image.



## Operating screen

---

1. Press Left key to move screen to left.
2. Press Right key to move screen right.
3. Press Stop key to stop rotation of board.
4. Don't write on connecting strips of screen. Images written across connecting boarders will not be copied together.
5. If screen has been stop prematurely, press left or right keys to move to beginning of screen.

## Changing paper -----

1. Press the open button. The printer cover will come down.
2. Take out paper roll.
3. Insert new roll with paper coming over the top of roll.
4. Center paper on black rubber spool with a few inches sticking out and close door.

### *Indoff*

**140 WEST WYND TERRACE  
MIDDLETOWN, CT 06457  
(860) 632-2026  
FAX (860) 632-2028  
[www.ahutton.com](http://www.ahutton.com)**

# QUARTET MANUAL

## 1. Program Install

*Indoff*  
140 WEST WYND TERRACE  
MIDDLETOWN, CT 06457  
(860) 632-2026  
FAX (860) 632-2028  
[www.ahutton.com](http://www.ahutton.com)

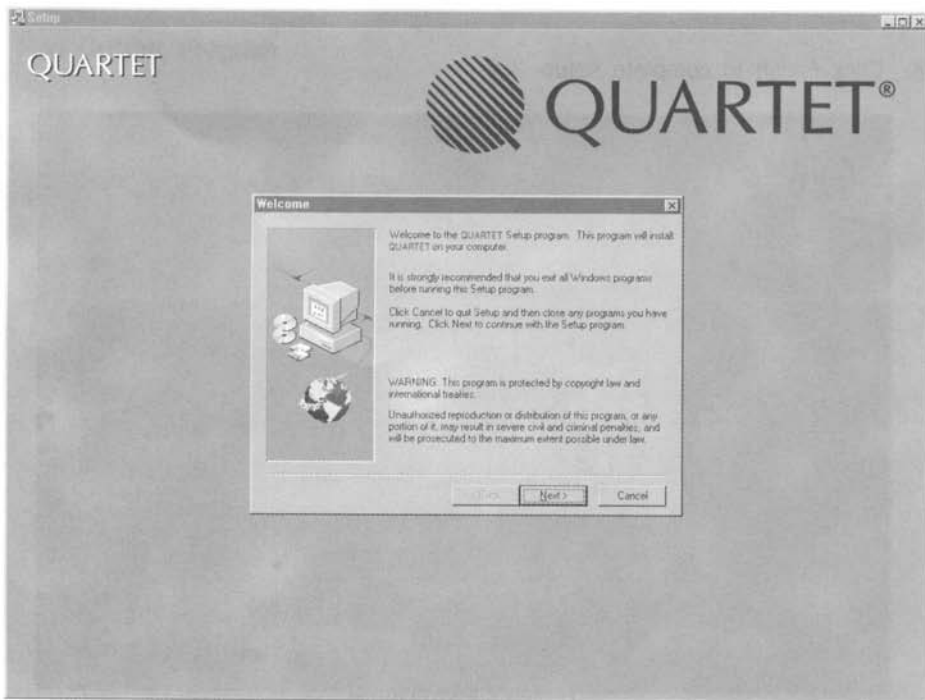
### 1.1 Minimum System Requirments

The minimum recomanded system is

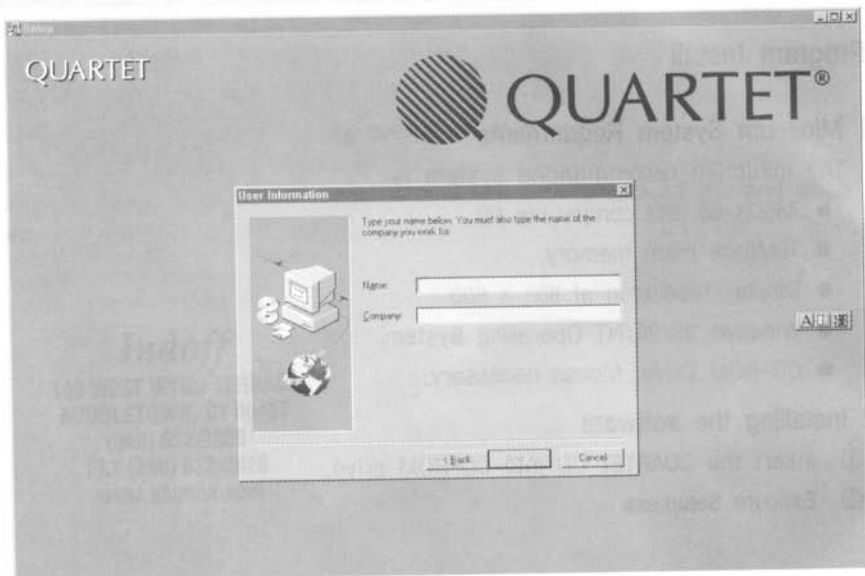
- 486DX-66 IBM compatible PC.
- 16MByte main memory.
- Display resolution of 800 X 600.
- Windows 95/98/NT Operating System.
- CD-ROM Drive, Mouse necessary.

### 1.2 Installing the software

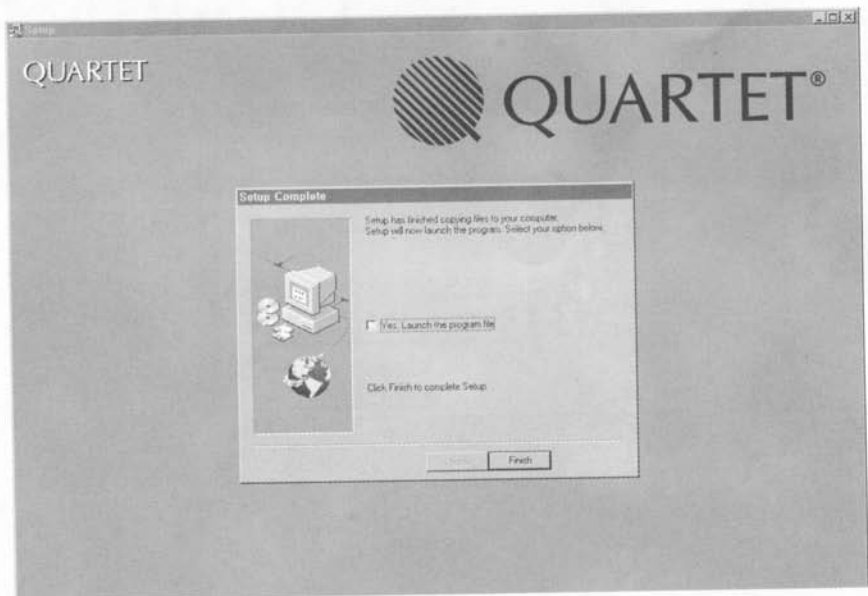
- ① Insert the **QUARTET** CD into CD-ROM drive.
- ② Execute **Setup.exe**.



- ③ Click Next button to continue after filling in this form.

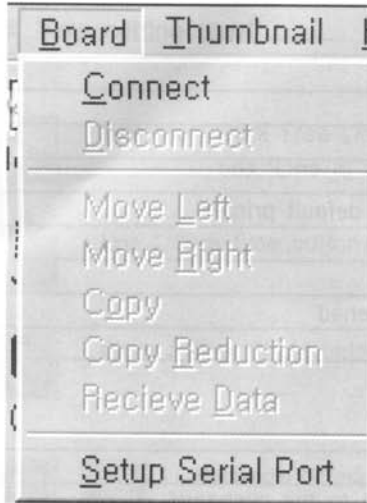


- ④ Click Finish to complete setup.





## 2. Serial Port Setup



- Plug the serial Cable into the back of Thermal Printer of Electronic Copy board.
- Connect the other end of the cable to the Serial Port of computer.
- Turn Electronic Copyboard on.
- Start "QUARTET" Program.
- Click on "BOARD" Menu and then click on "Setup Serial Port".
- Next choose your correct Com Port (Com 1, 2, 3 or 4) and click "OK".
- Setup is now complete.

## 3. Run Quartet Program

### ☞ Task Bar



- **CONNECT Button** : Connect to the Electronic Copyboard.
- **DISCONNECT Button** : Disconnect from the Electronic Copyboard.
- **LEFT Button** : Move the current screen to the left.
- **RIGHT Button** : Move the current screen to the right.
- **COPY Button** : Copy the current screen and download the data.
- **COPYALL Button** : Copy both screens and download the data.
- **RECIEVE Button** : Recall the image front the previous scan.

*Indoff*

140 WEST WYND TERRACE  
MIDDLETOWN, CT 06457  
(860) 632-2026

# Indoff

140 WEST WYND TERRACE

MIDDLETOWN, CT 06457

(860) 632-2026

FAX (860) 632-2028

www.ahutton.com

## Menu items

### File

New	Create new image file
Open	Open image
Save	Save current image
Save as	Save as another file name
Print	Print current image to your default printer
Printer Setup	Setup printers that are new
Close	Close current image
Close All	Close all current images opened
Exit	Exit from QUARTET.

### Edit

Undo	Cancel current operation.
Copy	Copy selected part of image to the clipboard.
Cut	Cut the selected part of image and copy to the clipboard.
Paste	Paste from the clipboard.

### View

Actual size	Shows image at 100%
Fit to Screen	Fit image to the screen

### Thumbnail

Hide	Maximize current board
Show	Shows all thumbnails
Update	Refresh thumbnails

### Window

Tile	Arrange image windows in a Tile format
Cascade	Arrange image windows in a Cascade format
Arrange Icons	Minimized image windows
Minimize All	Minimized all image windows

### Help

Help information about QUARTET.

## Drawing Tools

Images from the Electronic Copyboard can be modified using basic drawing tools.

**\* View setting must be on "Actual Size" in order to use Drawing Tools.**



**Free line** : Click Free Line button on toolbox and select color in the color box. Line is drawn by dragging the mouse.



**Line** : Click Line button on toolbox to draw a straight line.



**Circle** : Click Circle button on toolbox to draw a circle line.



**Rectangle** : You can draw a rectangle or round rectangle by selecting one of these tools.



**Fill Color** : Click the Fill Color button on toolbox and select the color in Color box. Then click the area where you want to fill.



**Select Area** : Click Select Area button on toolbox and the mouse over the area to be selected.



**Erase** : Click Erase button on tool box and drag mouse to where you want to erase.



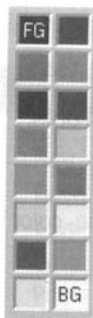
**Input Text** : Click input Text button to display Input Text Window. Enter text into the box and click OK. Move cursor to where you want text place and click mouse.



**Fill Type** : Choose Fill Type when you draw a shape.

**Indoff**

140 WEST WYND TERRACE  
MIDDLETOWN, CT 06457  
(860) 632-2026  
FAX (860) 632-2028  
www.ahutton.com



Select Color Box : Used to select a color



Line Width : You can change line width by changing the number in the box.

## *Indoff*

140 WEST WYND TERRACE  
MIDDLETOWN, CT 06457

(860) 632-2026

FAX (860) 632-2028

[www.ahutton.com](http://www.ahutton.com)

# Simple Repair and Check Points

Before asking the service, please check the following first -----

- **The Ready Lamp doesn't work although the switch was on**
  - Check whether the plug was in correctly or not
  - Check whether AC is 110V/220V or not
  
- **Ready Lamp and Paper Out Lamp are alternately lit on and off although Print Key has been pressed.**
  - First, check whether the fluorescent lamp is lit on or not.
  - If it is lit on, please request service because the CCD Module or main PCB might be poor.
  - If the lamp is not lit on, replace it with new one.
  
- **After pressing the Print Key, the screen moves but doesn't start to print**
  - It could happen because the sensor recognizing the point of start was covered with heavy marker remnant during long use and can't recognize the point of start.
  - In this case, turn the power switch off and then turn it on again while pressing the Right key. When paper lamp comes on, then stop pressing the Right key. It will set the Electronic Copyboard on default condition and start to print.
  - Also, you need to clean the eraser dust remained in the bottom of Electronic Copyboard as well.
  
- **Result of printing looks bad (Upper and lower parts are illegible)**
  - Check whether the writing pen (Marker Pen) is good or not. Replace it, if necessary.
  - Request service if problem persists.

**Indoff**  
140 WEST WYND TERRACE  
MIDDLETOWN, CT 06457  
(860) 632-2026  
FAX (860) 632-2028  
[www.ahutton.com](http://www.ahutton.com)

*National Service*  
*888-266-9543*  
*Q0 2000 series*